

LONDON 26 & ABBEY 22

On Display At HomeWorld Box Hill

Creative Collection



Creative Collection

London 26



Step into The London, a spacious double-storey home designed for growing families who need room to live and relax. With five bedrooms, three bathrooms, and a double garage, this home provides a thoughtful layout with everything a modern family could need, all built with Crystele Homes' commitment to quality finishes and superior inclusions.

The ground floor features a spacious, open-plan layout where the kitchen, dining, and lounge areas seamlessly flow into an inviting outdoor alfresco—perfect for entertaining. The addition of a study on this level creates a dedicated space for work or homework, and the guest suite with an adjoining bathroom provides added convenience for visitors or extended family.

Upstairs, the master suite offers a relaxing retreat with a generous walk-in robe and ensuite. Three more bedrooms and a family bathroom complete the upper level, providing ample space for every member of the family.

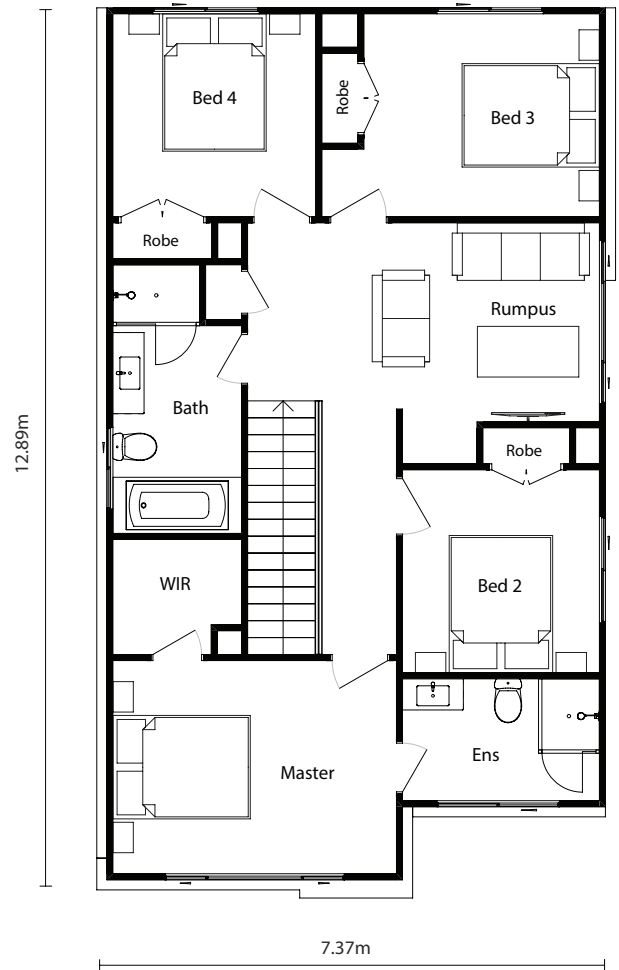
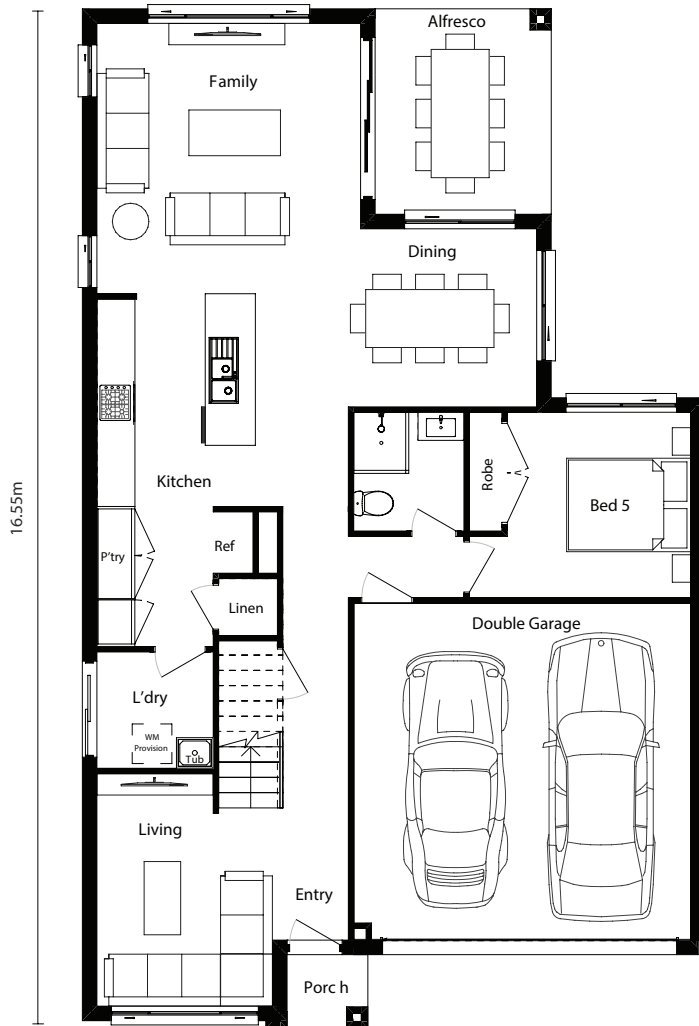
The London combines functionality with thoughtful design, ensuring your family has room to grow.

Available in the following sizes: 23sq and 24sq

London 26 as displayed

 On Display

 5  3  2 Lot Width 12.1m Home Size 25.7sq



LIVING AREAS

Kitchen	5.8 x 2.6m
Living	3.2 x 2.9m
Family	4.4 x 4.3m
Rumpus	2.9 x 4.2m
Bathroom	3.1 x 1.9 m
Laundry	1.9 x 1.9m
Dining	2.9 x 4.6m
Garage	5.5 x 5.5m
Ensuite	1.8 x 2.9m

BEDROOMS

Bed 1	3.1 x 4.2m
Bed 2	3.0 x 2.9m
Bed 3	3.0 x 3.5m
Bed 4	3.0 x 3.0m
Bed 5	3.0 x 3.0m

OUTDOOR


Alfresco	3.4 x 2.9m
----------	------------


HOME DETAILS


Ground Floor	102.53m ²
Garage	33.08m ²
Alfresco	9.68m ²
First Floor	91.76m ²
Total	238.63m²

Overall Width	10.19m
Overall Length	16.55m

London 23

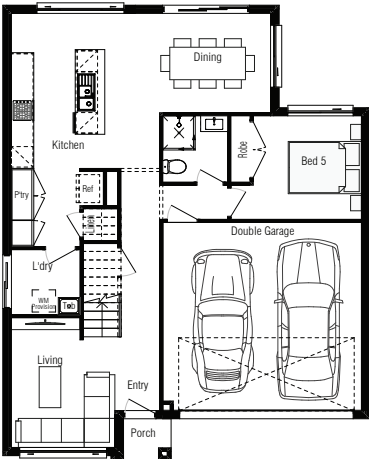
 5

 3

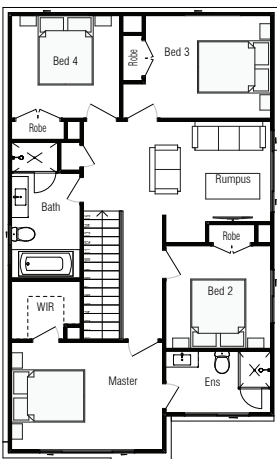
 2

Lot Width 12.1m

Home Size 22.91sq




Ground floor plan





First floor plan

LIVING AREAS		HOME DETAILS	
Kitchen	5.8 x 2.6m	Ground Floor	86.44m ²
Living	3.2 x 2.9m	First Floor	91.76m ²
Dining	2.9 x 4.6m	Garage	33.08m ²
Rumpus	2.9 x 4.2m	Porch	1.58m ²
Bathroom	3.1 x 1.9m	Total	212.86m²
Laundry	1.9 x 1.9m	Overall Width	10.19m
Garage	5.5 x 5.5m	Overall Length	13.19m
Ensuite	1.8 x 2.9m		
BEDROOMS			
Bed 1	3.1 x 4.2m		
Bed 2	3.0 x 2.9m		
Bed 3	3.0 x 3.5m		
Bed 4	3.0 x 3.0m		
Bed 5	3.0 x 3.0m		

London 24

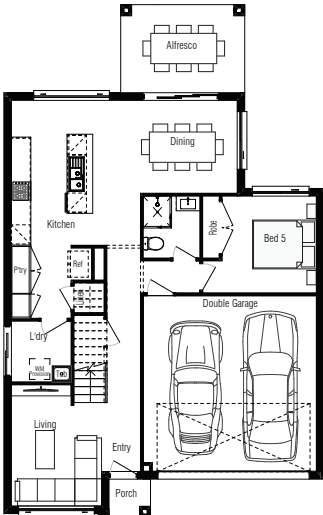
 5

 3

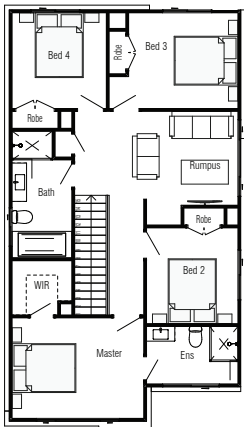
 2

Lot Width 12.1m

Home Size 24.08sq



Ground floor plan



First floor plan

LIVING AREAS		OUTDOOR	
Kitchen	5.8 x 2.6m	Alfresco	2.8 x 3.9m
Living	3.2 x 2.9m		
Dining	2.9 x 4.6m		
Rumpus	2.9 x 4.2m		
Bathroom	3.1 x 1.9m	HOME DETAILS	
Laundry	1.9 x 1.9m	Ground Floor	86.44m ²
Garage	5.5 x 5.5m	First Floor	91.76m ²
Ensuite	1.8 x 2.9m	Garage	33.08m ²
BEDROOMS		Alfresco	10.90m ²
Bed 1	3.1 x 4.2m	Porch	1.58m ²
Bed 2	3.0 x 2.9m	Total	223.76m²
Bed 3	3.0 x 3.5m	Overall Width	10.19m
Bed 4	3.0 x 3.0m	Overall Length	15.95m
Bed 5	3.0 x 3.0m		

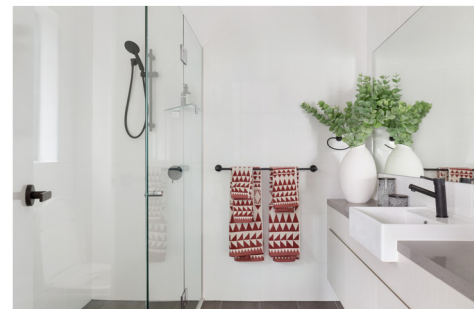
London Façades



* All drawings and photography are for illustrative purposes and should be used as a guide only. Drawings, Illustrations, Photographs and Images on this website / brochure may depict fixtures and finishes that are upgrades that are not available or require an additional upgrade. Crystele Homes reserves the right to revise plans, specifications, inclusions and prices without notice or obligation. © Copyright Crystele Homes. All plans and artworks remain the exclusive property of Crystele Homes unless a licence is issued otherwise.

Creative Collection

Abbey 22



Experience the ideal blend of functionality and style with The Abbey — a spacious single-storey home designed with the modern family in mind. Featuring four well-appointed bedrooms, two bathrooms, and a double garage, The Abbey combines thoughtfully designed spaces with the superior inclusions and quality finishes Crystele Homes is known for.

At the heart of The Abbey lies a generous open-plan living area, featuring an expansive kitchen and dining that flows seamlessly into an outdoor alfresco, creating an ideal setting for family gatherings and entertaining friends. The master suite, complete with ensuite and a walk-in robe, provides a peaceful retreat, while three additional bedrooms offer space and comfort for the whole family. With premium finishes and attention to detail in every corner.

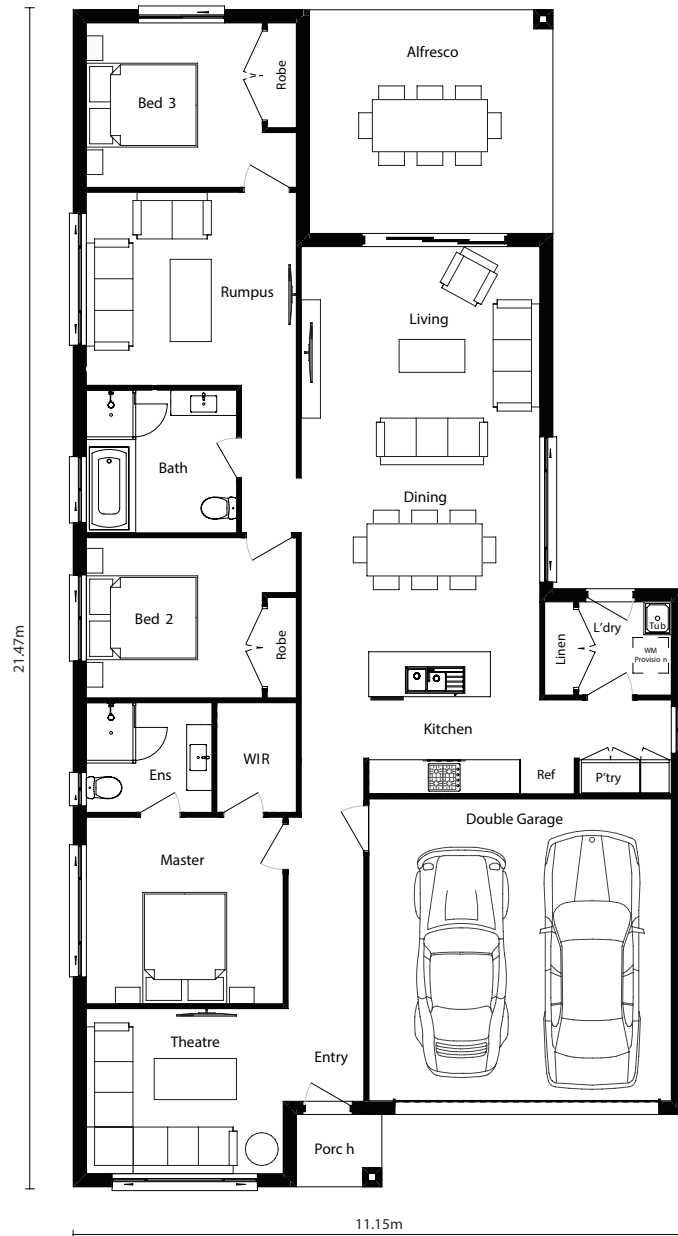
The Abbey is more than just a home—it's a lifestyle.

Also available in the following sizes – 19sq and 20sq

Abbey 22 as displayed



3
 2
 2
 Lot Width 13m
 Home Size 22.3sq



LIVING AREAS

Kitchen	2.6 x 5.5m
Living	3.7 x 4.4m
Dining	3.7 x 4.4m
Rumpus	3.5 x 3.8m
Bathroom	2.6 x 2.7m
Laundry	1.7 x 2.3m
Garage	5.5 x 5.5m
Ensuite	2.0 x 2.3m
Theatre	3.0 x 3.6m

BEDROOMS

Bed 1	3.4 x 3.6m
Bed 2	2.9 x 3.2m
Bed 3	3.0 x 3.2m



OUTDOOR

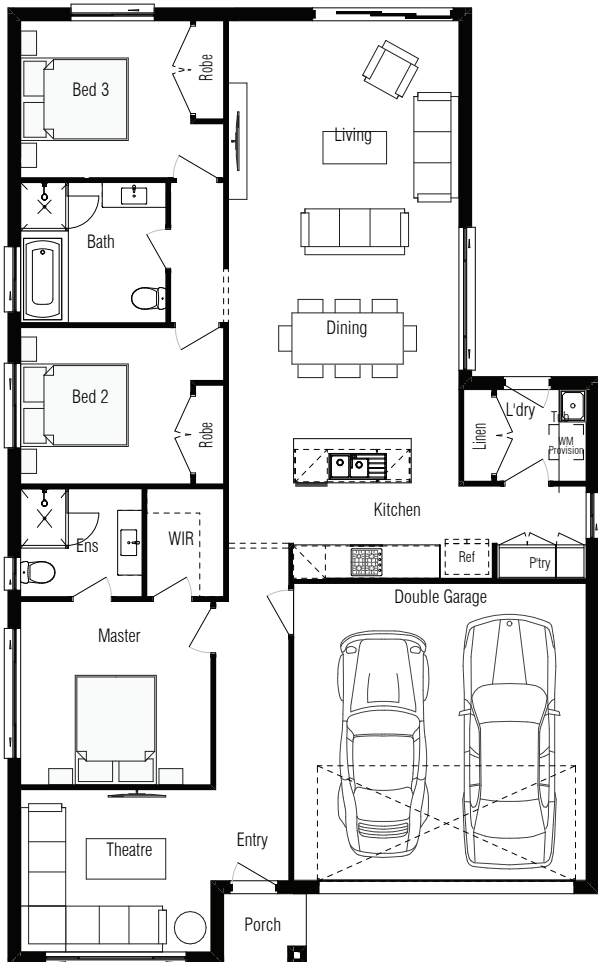
Alfresco	4.1 x 4.4m
----------	------------

HOME DETAILS

Ground Floor	153.41m ²
Garage	33.18m ²
Alfresco	18.12m ²
Total	206.77m²
Overall Width	11.15m
Overall Depth	21.47m

Abbey 19

 3
  2
  2
 Lot Width 13m Home Size 18.8sq



LIVING AREAS

Kitchen	2.6 x 5.5m
Living	3.9 x 4.4m
Dining	3.7 x 4.4m
Bathroom	2.6 x 2.7m
Laundry	1.7 x 2.3m
Garage	5.5 x 5.5m
Theatre	3.0 x 3.6m
Ensuite	2.0 x 2.3m

BEDROOMS

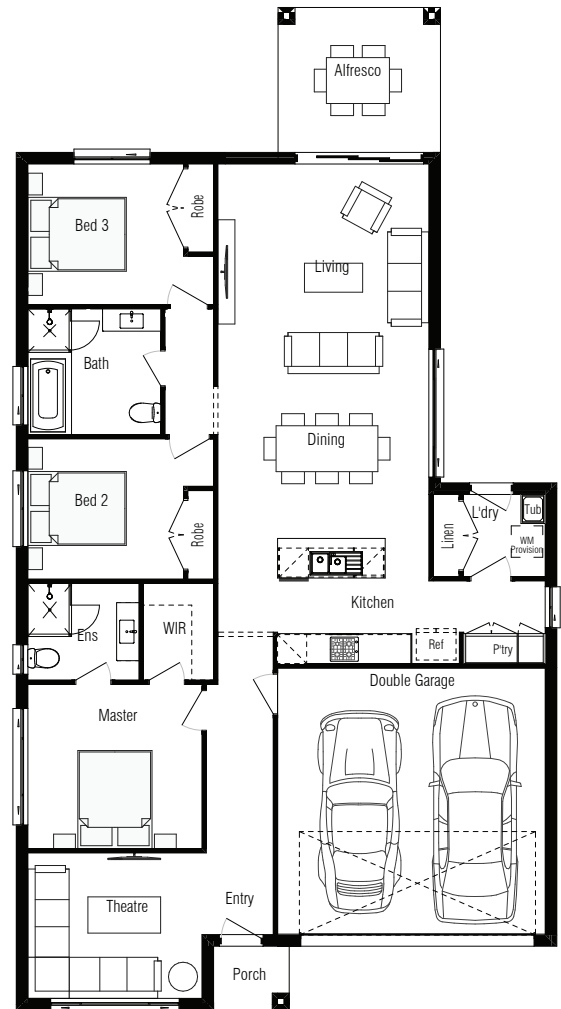
Bed 1	3.4 x 3.6m
Bed 2	2.9 x 3.2m
Bed 3	2.9 x 3.2m

HOME DETAILS

Ground Floor	138.97m ²
Garage	33.18m ²
Porch	2.06m ²
Total	174.21m²
Overall Width	11.15m
Overall Depth	17.75m

Abbey 20

 3
  2
  2
 Lot Width 13m Home Size 19.8sq



LIVING AREAS

Kitchen	2.6 x 5.5m
Living	3.9 x 4.4m
Dining	3.7 x 4.4m
Bathroom	2.6 x 2.7m
Laundry	1.7 x 2.3m
Garage	5.5 x 5.5m
Theatre	3.0 x 3.6m
Ensuite	2.0 x 2.3m

BEDROOMS

Bed 1	3.4 x 3.6m
Bed 2	2.9 x 3.2m
Bed 3	2.9 x 3.2m

OUTDOOR

Alfresco	3.2 x 3.3m
----------	------------

HOME DETAILS

Ground Floor	138.97m ²
Garage	33.18m ²
Alfresco	10.05m ²
Porch	2.06m ²
Total	184.26m²

Overall Width	11.15m
Overall Depth	17.75m

Abbey Façades



* All drawings and photography are for illustrative purposes and should be used as a guide only. Drawings, Illustrations, Photographs and Images on this website / brochure may depict fixtures and finishes that are upgrades that are not available or require an additional upgrade. Crystele Homes reserves the right to revise plans, specifications, inclusions and prices without notice or obligation. © Copyright Crystele Homes. All plans and artworks remain the exclusive property of Crystele Homes unless a licence is issued otherwise.





Display Locations



HOMEWORLD BOX HILL

13 & 15 Gizi Street, Box Hill, NSW 2765

● Kellyville

● Penrith

● Parramatta

● Sydney

● Liverpool



HOMEWORLD ORAN PARK

120 Brabham Drive, Oran Park, NSW 2570

● Campbelltown



MENANGLE PARK

No 3 Subzero Crescent, Menangle Park, NSW 2563



Coming Soon

FIGTREE HILL

HOMEWORLD BOX HILL

ON DISPLAY: ABBEY, LONDON

📍 13 Gizi Street, Box Hill
NSW 2765

ENQUIRIES

HEAD OFFICE

4/39 Topham Rd,
Smeaton Grange, NSW 2567

02 4648 1913

info@crystelehomes.com.au
crystelehomes.com.au

