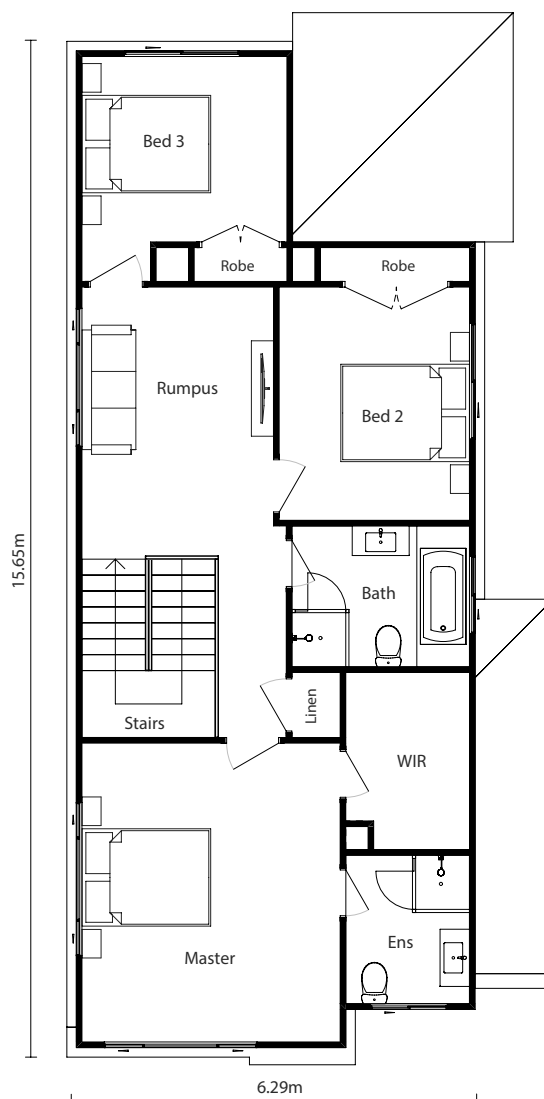
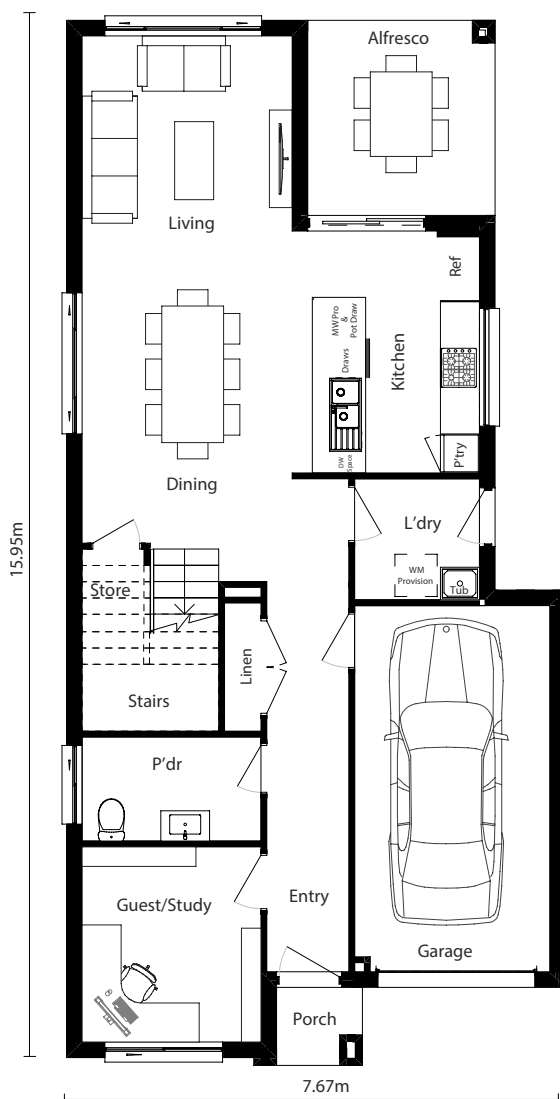




Lot Width 10m

Home Size 21.3sq



LIVING AREAS

Living	3.00 x 3.23m
Dining	3.70 x 3.23m
Kitchen	2.88 x 3.70m
Garage	5.52 x 3.09m
Laundry	1.86 x 1.92m
Study	3.00 x 2.75m
Powder Room	1.60 x 2.75m
Rumpus	4.02 x 3.02m
Main Bathroom	2.21 x 2.80m
Ensuite	2.33 x 1.95m

BEDROOMS

Bed 1	4.69 x 4.07m
Bed 2	3.66 x 3.00m
Bed 3	2.91 x 3.23m

OUTDOOR

Porch	TBA
Alfresco	3.00 x 2.88m

HOME DETAILS

Ground Floor	80.2m ²
First Floor	88.57m ²
Garage	19.28m ²
Porch	1.58m ²
Alfresco	8.64m ²
Overall Width	7.67m
Overall Length	15.95m

Total 198.27m²

Jersey MKII Façades



* Copyright 2025 Crystele Homes. All drawings and photography are for illustrative purposes and should be used as a guide only. All photographs, Façades, colour schemes, floor plans and dimensions are for illustrative purposes only and may vary slightly to the end product. These items may consist of but are not limited to external landscaping, paths, paving, stone cladding, planter boxes, retaining walls, water features, pergolas, screens, clothes lines, render or textured features to masonry walls and decorative landscaping items such as fencing, outdoor kitchens, barbeques and feature lighting. Likewise internal features such as TV's, and audio systems, furniture, main floor & window coverings, garage door upgrades, roof upgrades, dishwasher, fridge, microwave, air conditioner, timber and stone flooring and cladding (natural or man-made) are also not included. Any prices on this website/ brochure do not include the supply of any of these items unless specifically noted. Crystele Homes reserves the right to revise plans, specifications, inclusions and prices without notice or obligation. For full list of inclusions and detailed home pricing, please contact Crystele Homes, ABN 52 123 978 674, Builder Licence Number 181646C. ©COPYRIGHT: Copyright of plans and documentation prepared by Crystele Homes shall remain the exclusive property of Crystele Designer Homes Pty Ltd unless a licence is issued otherwise. Unit 4, 39 Topham Rd, Smeaton Grange, NSW 2567, <https://crystelehomes.com.au/>

HEAD OFFICE
4/39 Topham Rd,
Smeaton Grange, NSW 2567

02 4648 1913
info@crystelehomes.com.au
crystelehomes.com.au

