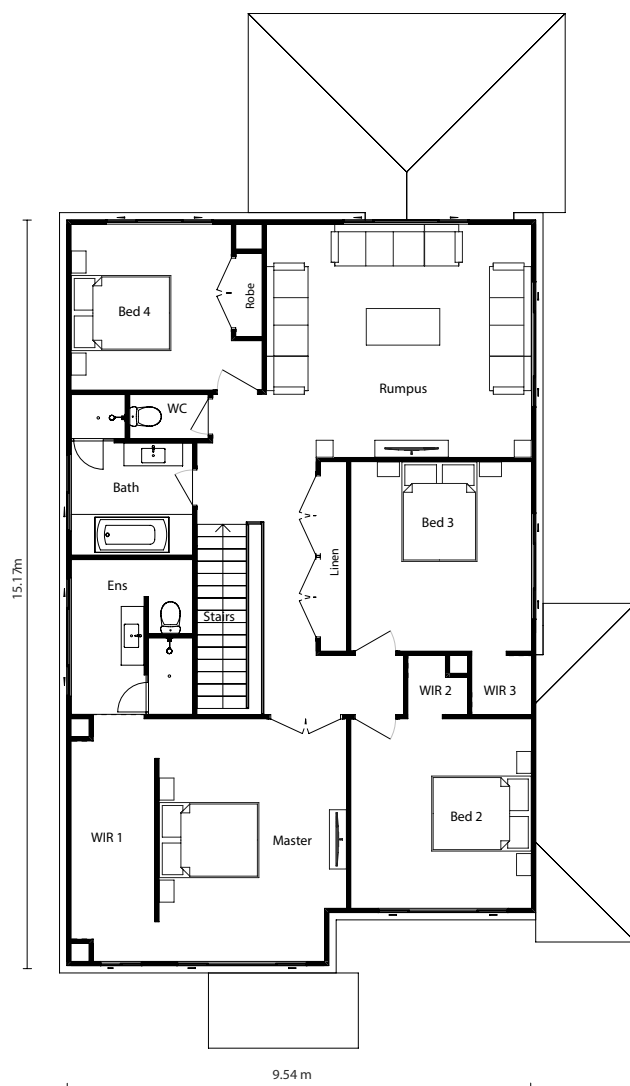
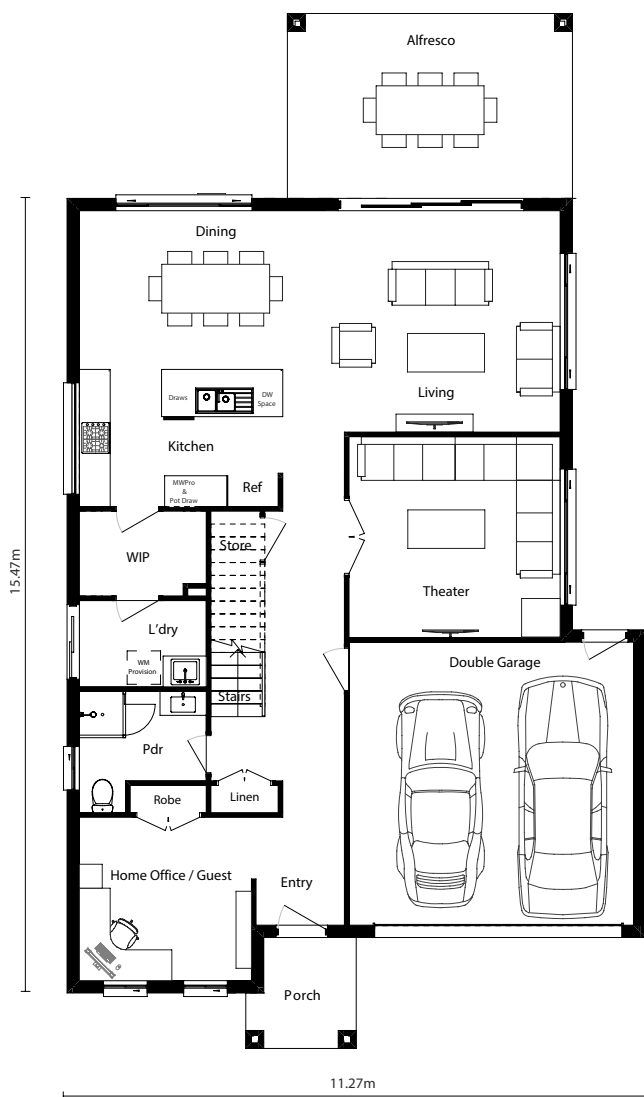




Lot Width 13.5m

Home Size 34sq



LIVING AREAS

Living	4.31 x 4.21m
Dining	3.14 x 5.15m
Kitchen	2.67 x 3.96m
Theatre	3.90 x 4.11m
Double Garage	5.53 x 5.54m
Laundry	1.68 x 2.47m
Powder Room	2.36 x 2.47m
Rumpus	4.74 x 5.39m
Home Office	3.18 x 3.35m

BEDROOMS

Bed 1	4.93 x 3.81m
Bed 2	3.85 x 3.67m
Bed 3	3.85 x 3.67m
Bed 4	3.37 x 3.26m

OUTDOOR

Porch	TBA
Alfresco	3.60 x 5.55m

HOME DETAILS

Ground Floor	119.93m ²
First Floor	141.12m ²
Garage	33.59m ²
Porch	3.99m ²
Alfresco	19.70m ²
Overall Width	11.27m
Overall Length	19.95m
Total	318.33 m²

Diamond MKI Façades



Aspire



Lifestyle



Hamptons



Modern



Coastal Modern



Coastal



Traditional



Contemporary

* Copyright 2025 Crystele Homes. All drawings and photography are for illustrative purposes and should be used as a guide only. All photographs, Façades, colour schemes, floor plans and dimensions are for illustrative purposes only and may vary slightly to the end product. These items may consist of but are not limited to external landscaping, paths, paving, stone cladding, planter boxes, retaining walls, water features, pergolas, screens, clothes lines, render or textured features to masonry walls and decorative landscaping items such as fencing, outdoor kitchens, barbeques and feature lighting. Likewise internal features such as TV's, and audio systems, furniture, main floor & window coverings, garage door upgrades, roof upgrades, dishwasher, fridge, microwave, air conditioner, timber and stone flooring and cladding (natural or man-made) are also not included. Any prices on this website/ brochure do not include the supply of any of these items unless specifically noted. Crystele Homes reserves the right to revise plans, specifications, inclusions and prices without notice or obligation. For full list of inclusions and detailed home pricing, please contact Crystele Homes, ABN 52 123 978 674, Builder Licence Number 181646C. ©COPYRIGHT: Copyright of plans and documentation prepared by Crystele Homes shall remain the exclusive property of Crystele Designer Homes Pty Ltd unless a licence is issued otherwise. Unit 4, 39 Topham Rd, Smeaton Grange, NSW 2567, <https://crystelehomes.com.au/>

HEAD OFFICE
4/39 Topham Rd,
Smeaton Grange, NSW 2567

02 4648 1913
info@crystelehomes.com.au
crystelehomes.com.au

