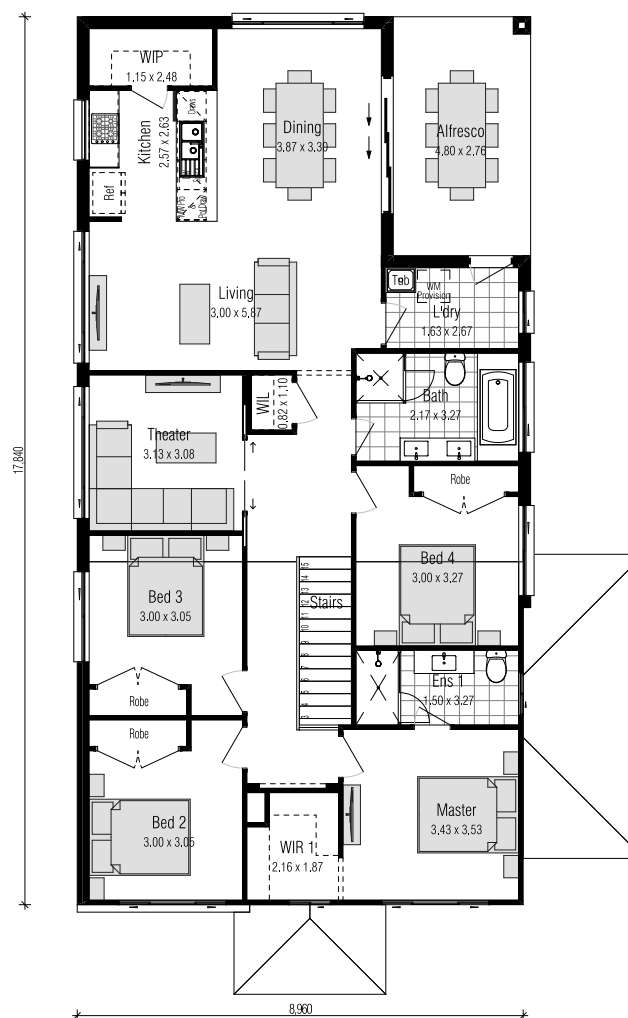
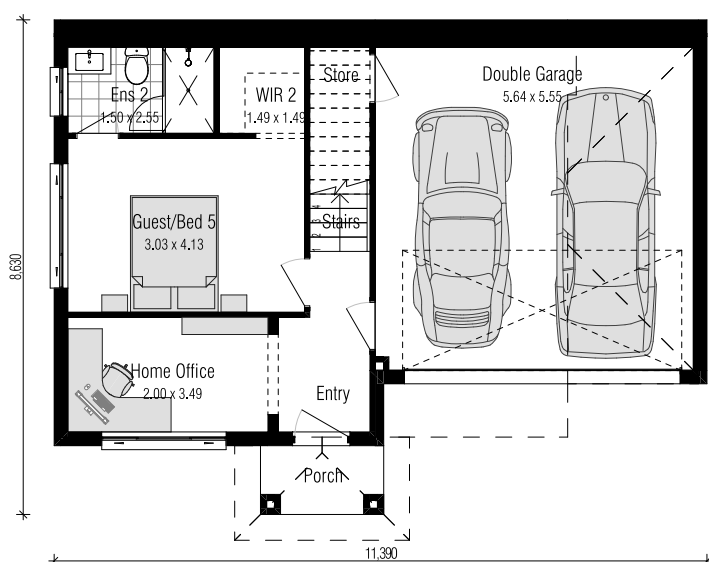




Lot Width 8.96m

Home Size 26.13sq



LIVING AREAS

Living	3.00 x 5.87m
Dining	3.87 x 3.30m
Kitchen	2.57 x 2.63m
Theatre	3.13 x 3.08m
Garage	5.64 x 5.55m
Laundry	1.63 x 2.67m
Home Office	2.00 x 3.49m

BEDROOMS

Bed 1	3.43 x 3.53m
Bed 2	3.00 x 3.05m
Bed 3	3.00 x 3.05m
Bed 4	3.00 x 3.27m
Bed 5	3.03 x 4.13m

OUTDOOR

Porch	TBA
Alfresco	4.80 x 2.76m

HOME DETAILS

Ground Floor	41.77m ²
First Floor	148.38m ²
Garage	36.77m ²
Porch	2.58m ²
Alfresco	13.25m ²
Overall Width	8.96m
Overall Length	17.84m
Total	242.75m²

Phoenix Split Façades



* Copyright 2025 Crystele Homes. All drawings and photography are for illustrative purposes and should be used as a guide only. All photographs, Façades, colour schemes, floor plans and dimensions are for illustrative purposes only and may vary slightly to the end product. These items may consist of but are not limited to external landscaping, paths, paving, stone cladding, planter boxes, retaining walls, water features, pergolas, screens, clothes lines, render or textured features to masonry walls and decorative landscaping items such as fencing, outdoor kitchens, barbeques and feature lighting. Likewise internal features such as TV's, and audio systems, furniture, main floor & window coverings, garage door upgrades, roof upgrades, dishwasher, fridge, microwave, air conditioner, timber and stone flooring and cladding (natural or man-made) are also not included. Any prices on this website/ brochure do not include the supply of any of these items unless specifically noted. Crystele Homes reserves the right to revise plans, specifications, inclusions and prices without notice or obligation. For full list of inclusions and detailed home pricing, please contact Crystele Homes, ABN 52 123 978 674, Builder Licence Number 181646C. ©COPYRIGHT: Copyright of plans and documentation prepared by Crystele Homes shall remain the exclusive property of Crystele Designer Homes Pty Ltd unless a licence is issued otherwise. Unit 4, 39 Topham Rd, Smeaton Grange, NSW 2567, <https://crystelehomes.com.au/>

HEAD OFFICE
4/39 Topham Rd,
Smeaton Grange, NSW 2567

02 4648 1913
info@crystelehomes.com.au
crystelehomes.com.au

