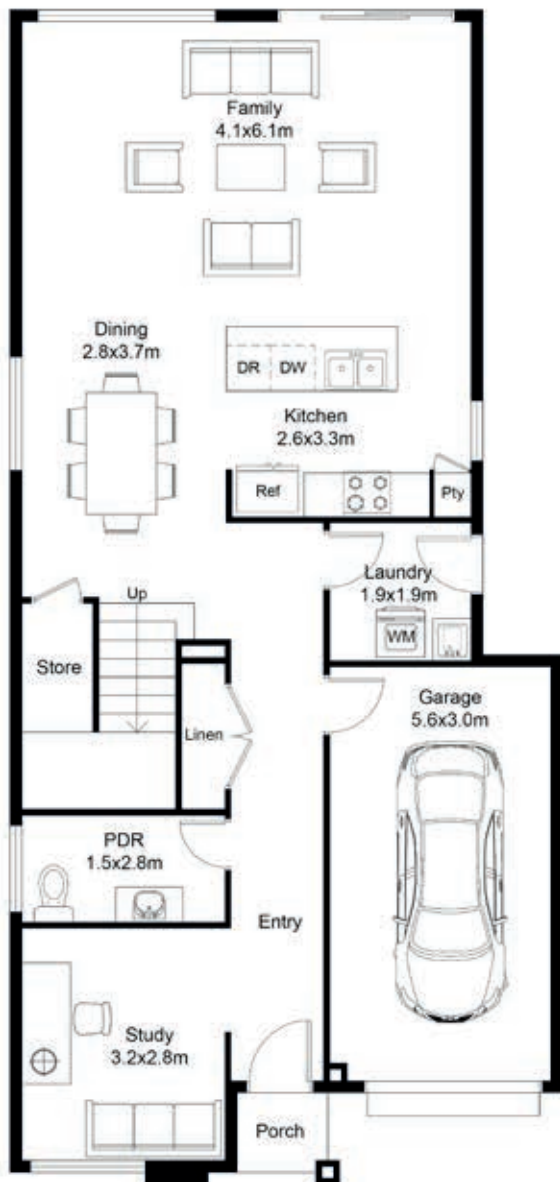
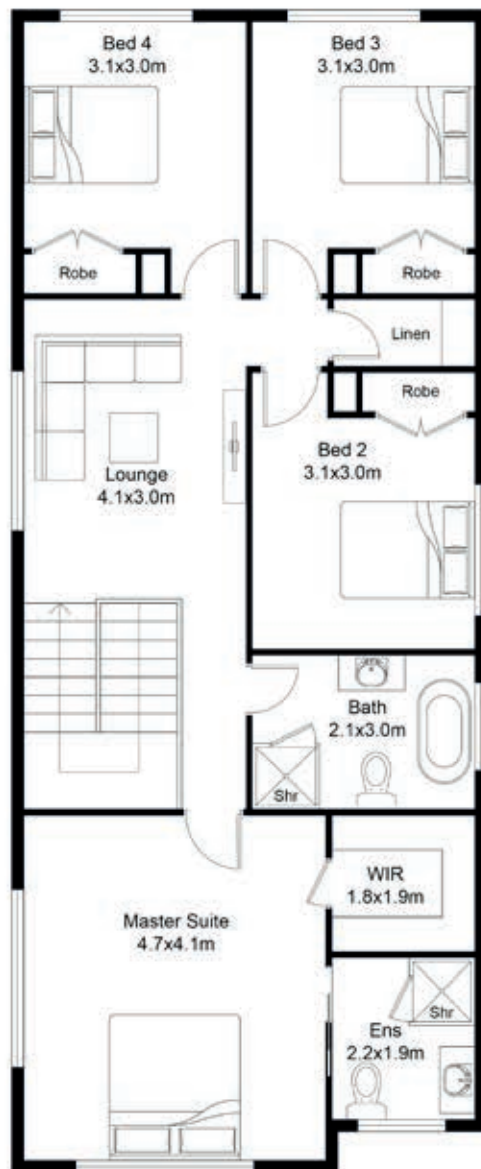


BEDS	BATHS	CARSPACES
4	2.5	1

Ground floor plan



First floor plan



MK I

Width	7.67m
Depth	15.95m
Ground floor	88.82m ²
First Floor	97.23m ²
Garage	19.28m ²
Porch	1.29m ²

HOUSE

206.62m² 22sq

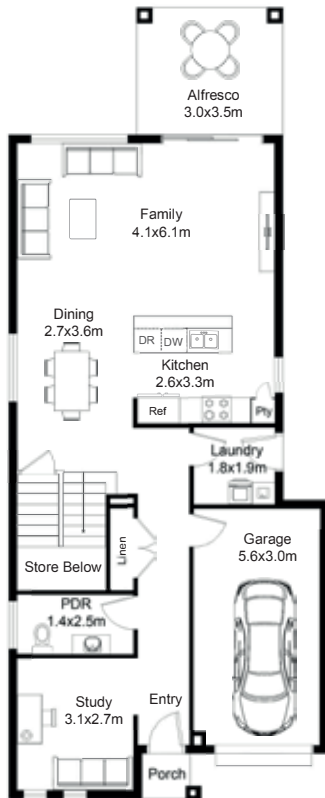
Disclaimer: All photographs, facades, colour schemes, floor plans and dimensions are for illustrative purposes only and may vary slightly to the end product.

The Winchester

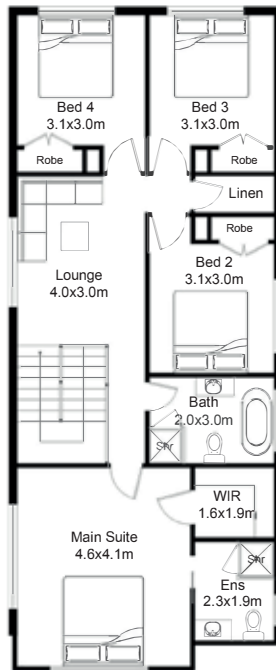
DOUBLE STOREY

Suits 10m frontage

BEDS	BATHS	CARSPACES
4	2.5	1



Ground floor plan

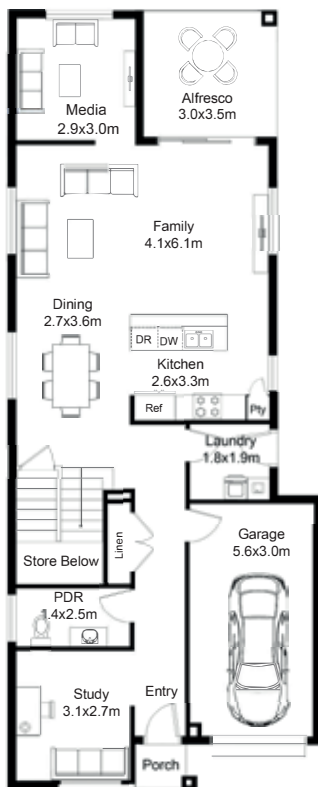


First floor plan

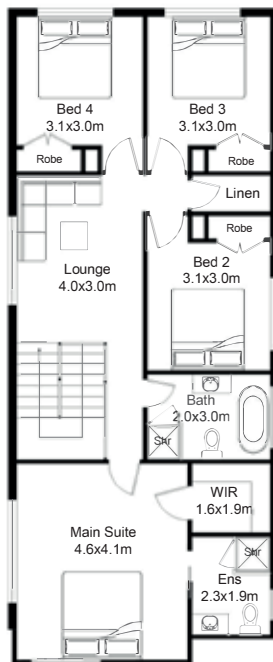
MK II

Width	7.67m
Depth	18.95m
Ground floor	88.82m ²
First Floor	97.23m ²
Garage	19.28m ²
Porch	1.29m ²
Alfresco	10.5m ²

HOUSE	
217.11m ²	23sq



Ground floor plan



First floor plan

MK III

Width	7.67m
Depth	18.95m
Ground floor	98.75m ²
First Floor	101.72m ²
Garage	19.28m ²
Porch	1.44m ²
Alfresco	9.36m ²

HOUSE	
230.55m ²	25sq

Disclaimer: All photographs, facades, colour schemes, floor plans and dimensions are for illustrative purposes only and may vary slightly to the end product.